

Elizabeth line →

Explore

# PADDINGTON

SUMMER 2022

## EXPECT THE UNEXPECTED

Make a beeline for extraordinary venues

## ELIZABETH LINE

Transforming transport by Royal Appointment

## SUSTAINABILITY

Lose yourself in a yoga flow and follow the Butterfly Superhighway

# Outdoor

## LIVING

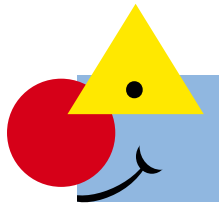
From vibrant dishes and open-air music, to eye-catching art and floating fun

WHAT'S ON | WHAT'S NEW | ON THE WATER | EATING OUT

PaddingtonNow

BUSINESS  
IMPROVEMENT  
DISTRICT

The Paddington Partnership



# Hope Montessori School



Supporting our local community for 15 years

[admin@hopemontessorischool.com](mailto:admin@hopemontessorischool.com)

+44 7919 844853

[www.hopemontessorischool.com](http://www.hopemontessorischool.com)

# CONTENTS

## 4 MAP

Use our illustrated map to find your way around

## 6 WHAT'S ON

Wimbledon on the big screen, free yoga lessons, Zorbing and a dragon boat regatta are a few summer highlights

## 8 WHAT'S NEW

Grab a tasty lunch at one of the new street food trucks in Merchant Square, take part in a strength-training workout and have a blow dry in an Airstream

## 10 BRICKLIVE

Visit life-sized models of Paddington™ Bear and friends as they come to London

## 12 ON THE WATER

Explore the Grand Union Canal by kayak, captain your own GoBoat or dine at a floating restaurant

## 14 PLAN YOUR DAY: ITINERARIES

Fill up your day from sunrise to sunset with our specially curated itineraries

## 16 SUSTAINABILITY

Make a positive difference by charting your own nature trail, taking part in a yoga flow and spotting beautiful butterflies



## 18 ELIZABETH LINE

The Elizabeth line has transformed Paddington, and travel in general, for both Londoners and locals alike

## 20 EAT

You won't need to travel abroad to enjoy bright and healthy dishes bursting with sunshine

## 22 DRINK

Experience the unexpected on a night out, from cabaret shows to cocktails at a beach club

## 24 GIVE

Support a worthy cause and have fun in the process with sponsored walks, charity shopping and duck racing

## 26 CHANGE

A host of new developments – complete with some stunning pieces of contemporary art – are electrifying the landscape

## 28 STAY

Be spoilt for choice with an abundance of new places to stay and stylish refurbishments in Paddington this summer

## 30 FIVE MINUTES WITH ...

ArtSource's Patrick Morey-Burrows, curator of the eye-catching clock *Real Time*

## GET IN TOUCH

✉ [magazine@paddingtonnow.co.uk](mailto:magazine@paddingtonnow.co.uk) #ExplorePaddington

📷 @inpaddington 📺 InPaddington 📺 InPaddington 📺 www.youtube.com/user/PaddingtonLondon

🌐 Listings: [www.thisispaddington.com](http://www.thisispaddington.com) 🌐 Business: [www.paddingtonnow.co.uk](http://www.paddingtonnow.co.uk)

# YOUR AREA MAP



Bar Torelli © The Paddington Partnership

The new Elizabeth line has been decades in the making and is an absolute game-changer – for Paddington Station, W2 and beyond. But why just pass through when there’s so much to encourage you to stay?

Summer is here and it’s already shaping up to be a great one, so savour the season by listening to musicians in Merchant Square, trying yoga, Zorbing outdoors or watching a dragon boat and rubber duck race in Paddington Basin. Don’t forget to check out the colourful collection of BRICKLIVE Paddington™ Bear models coming in July. And that’s just during the day. As night falls, sip Pimm’s on a canal-side terrace, go for dinner at the new Wagamama or watch a film while sitting beneath the stars.

Locals, meanwhile, will have noticed a few changes. Kick off your weekends at the new GRNDHOUSE fitness studio or try out The Gym Group London Paddington, which is opening soon. Foodies, you may want to stop by the two new food trucks in Merchant Square, give Bar + Block Steakhouse on North Wharf Road a go or meet friends in Paddington Café, a homage to the children’s character in Michael Bond’s stories who was revealed to be an unexpected friend of The Queen during the recent celebrations for Her Majesty’s Platinum Jubilee. After all, the author said, “Paddington has a habit of bringing people closer together.”

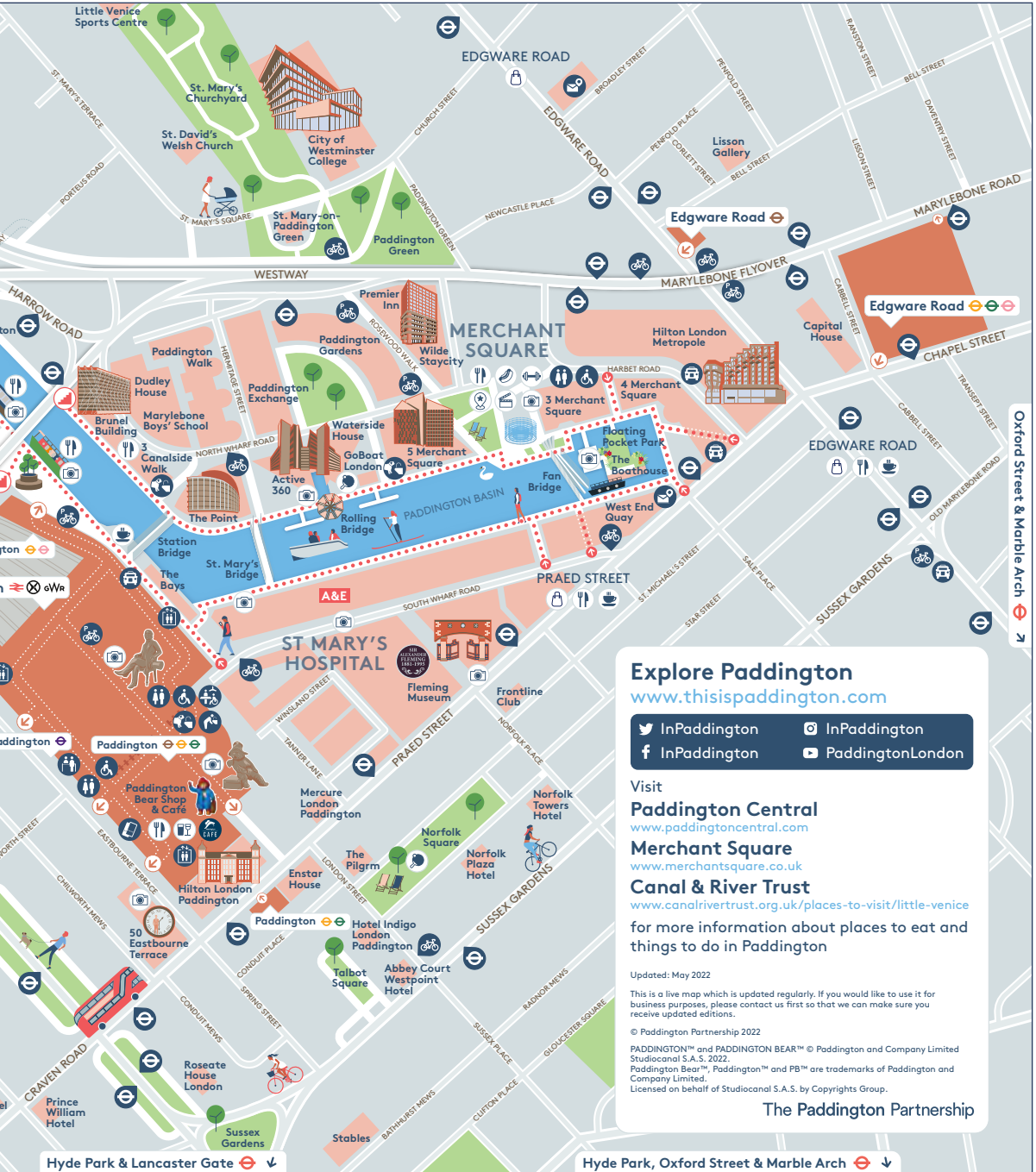
*Sarah*

**Sarah Riches**  
Editor





*WELCOME to Explore Paddington's summer issue – brought to you by PaddingtonNow Business Improvement District (BID) and The Paddington Partnership*



**Explore Paddington**  
[www.thisispaddington.com](http://www.thisispaddington.com)

InPaddington
 InPaddington  
 InPaddington
 PaddingtonLondon

Visit  
**Paddington Central**  
[www.paddingtoncentral.com](http://www.paddingtoncentral.com)  
**Merchant Square**  
[www.merchantsquare.co.uk](http://www.merchantsquare.co.uk)  
**Canal & River Trust**  
[www.canalrivertrust.org.uk/places-to-visit/little-venice](http://www.canalrivertrust.org.uk/places-to-visit/little-venice)

for more information about places to eat and things to do in Paddington

Updated: May 2022

This is a live map which is updated regularly. If you would like to use it for business purposes, please contact us first so that we can make sure you receive updated editions.

© Paddington Partnership 2022  
 PADDINGTON™ and PADDINGTON BEAR™ © Paddington and Company Limited  
 StudioCanal S.A.S. 2022.  
 Paddington Bear™, Paddington™ and PB™ are trademarks of Paddington and Company Limited.  
 Licensed on behalf of StudioCanal S.A.S. by Copyrights Group.

**The Paddington Partnership**

# WHAT'S ON

All details are correct at time of going to print, but please check online in case they change

*Make the most of those blue skies this summer and attend an al fresco cinema, an outdoor yoga class and visit life-sized models of Paddington™ Bear*



## JUNE

**Until 30 Aug:** Had a stressful start to the week? Or perhaps you're on holiday and have all the time in the world? Either way, take your yoga mat down to Norfolk Square Gardens and join in a gentle flow yoga class courtesy of PaddingtonNow Business Improvement District (BID) and Live Karma Yoga. Subject to weather. Tues 10am. FREE. *Norfolk Square Gardens, W2. paddingtonnow.co.uk.*



Summer movie magic

## SCREEN STARS

**Until 31 Aug:** Why watch Netflix at home when you can sit back, relax and enjoy a film under the stars? Throughout summer, **Merchant Square Movies** hosts blockbusters, and there's no need to book – simply turn up, grab a deckchair and watch recent and old favourites on the big screen in a beautiful and atmospheric location. Seating is available on a first come, first served basis. The Big Screen is located at the Pavilion, which is the grassy area opposite the M&S Café. Very handy for snacks and cold drinks. **Merchant Square, W2 1AJ. 020 7298 2455. merchantsquare.co.uk**



Go with the flow

**27 Jun-10 Jul:** Stock up on strawberries in nearby Marks & Spencer, order a Pimm's from a vendor in Paddington Basin and unfurl your picnic blanket: now you're all set to watch Wimbledon on the big screen by the canal. Wearing whites is optional. FREE. *Merchant Square.*

## JULY

**1-31 Jul:** Imperial Health Charity is inviting you to Walk for Wards to help raise vital funds for five London hospitals, including St Mary's. 9am-6pm. *imperialcharity.org.uk.*

**5 Jul:** Take Pride in Paddington Day. Get involved with the community and help clean up the streets ready for the start of summer. Book now at *paddingtonnow.co.uk.*

**12 Jul:** The Frontline Club hosts talks, screenings and exhibitions to highlight the work of the press in

the line of fire. Tonight's event is a bravery awards judged by Christina Lamb and Con Coughlin. 7pm-8.30pm. £15. *13 Norfolk Place, W2 1QJ. 020 7479 8954. frontlineclub.com.*

**19 Jul:** Do something different over your lunch break and learn about the resident butterflies and the Big City Butterfly project at the Norfolk Square Butterfly wellbeing walk. 1pm-1.45pm. Book at *paddingtonnow.co.uk.*

**23 Jul:** Funfair rides, face painters and balloon artists will take over Norfolk Square Gardens to celebrate the arrival of the BRICKLIVE Paddington™ Bear collection. FREE. *bricklivegroup.com; thisispaddington.com.*



Lyrical lunchtimes

**23-31 Jul:** PaddingtonNow Business Improvement District has partnered with BRICKLIVE Group to

Face painting  
and balloon  
artists in Norfolk  
Square Gardens



Try Zorbing



And they're off!



Paddington™  
BRICKLIVE  
is coming  
to London



Dragon boat  
regatta

Grand Union Canal. You have to try it to believe how much fun it is. 11am-7pm. FREE. *Merchant Square, see p.6.*

## SEPTEMBER

**10 Sep:** Folk fans, don't miss *Dispatches on the Red Dress*, a solo show by a BBC Radio 2 Folk Awards winner. Inspired by her German grandmother's youth in 1940s Germany, Rowan Rheingans weaves stories about identity and joy. 7.30pm. £15. *Grand Junction at St Mary Magdalene Church, Rowington Close, W2 5FT. 020 7266 8258. grandjunction.org.uk.*

## ONGOING

There are a host of activities that continue throughout the year. For a fun, self-drive boating experience, charter your own eco-friendly electric **GoBoat** and cruise along a variety of routes including towards Little Venice, Regent's Park and London Zoo ([goboat.co.uk](http://goboat.co.uk)). Alternatively, discover the canal by kayak or paddleboard with **Active360**, or download the **Adventure Lab** app to uncover hidden gems, learn local trivia and discover landmarks. Select a unique outdoor scavenger hunt, experience or game created and shared by the local community. Feeling adventurous? Try **yoga** or **Pilates** on a **paddleboard** ([active360.co.uk](http://active360.co.uk)). The perfect way to exercise your body and mind. Finally, if, like the Queen, you can't get enough of Paddington Bear™, then take the **Pawprint Trail** around Paddington. The self-guided walk starts at the Paddington Shop in Paddington Station and takes you past bronze, velvety and brick bear statues of the famous marmalade muncher ([thisispaddington.com](http://thisispaddington.com)).

bring life size brick models from the Paddington™ franchise to London. The models will be displayed as a colourful curated collection with free entry to the public in Norfolk Square Gardens from the 23- 31 Jul.

**27 Jul, 25 Aug & 1 Sep:** Make the most of your local lunchbreak options or plan a special trip to Paddington to listen to emerging musicians perform live monthly at lunchtimes on Thursdays. 12.30pm-2.30pm. FREE. *Merchant Square, see left.*

**28 Jul:** Paddington Basin's rubber duck race is returning to Merchant Square to raise funds for the charity Children of St Mary's Intensive Care (COSMIC). You can sponsor a duck for £3 online or from the West Plaza steps near Marks & Spencer between noon and 2pm on Thursdays running up to the event. *Merchant Square, see left.*

**28 Jul:** What do a Viking, Wonder Woman and a man dressed as a sausage all have

in common? Very little on the face of it – unless it's late July; then you can safely assume that they're participating in Paddington Basin's Dragon Boat Regatta. The event raises funds for COSMIC, and sees 20 teams of 10 rowers racing to the beat of a drum in a bid to take home the trophy. 5pm-9pm. *Merchant Square, see left.*

## AUGUST

**Ongoing:** Free paddleboard yoga every Tuesday in August (*Merchant Square, see above*). For a dose of comedy and theatre in the heart of Little Venice, pay a visit to the Canal Café Theatre. August highlights include *Wuthering Tights* (5-7 Aug) and the stand-up show *Confidently Insecure* (22-24 Aug). 13 Westbourne Terrace, W2 6NG. 020 7289 6054. [canalcafetheatre.com](http://canalcafetheatre.com).

**10-11 Aug:** Why run on a treadmill indoors when you can wear yourself out on a Zorb? Like a hamster on a wheel, three children or two adults can run inside inflatable balls that float on the

# WHAT'S NEW

*Dine out on the tastiest street food, pump iron in a strength-training workout and treat yourself to a new hairdo for a Hollywood A-lister*

## EAT OUT

In a city as culturally diverse as London, it's hardly surprising that a dynamic street food scene has taken hold. Thanks to a combination of flavours and foodie flair to rival anything you might find at the smartest of restaurants, the appetite for food on the go has been insatiable. Paddington is no stranger to this culinary wave, and now two new food trucks have recently taken up residence to satisfy those looking for tasty morsels on the move.

**Katsu King** is the brainchild of Michael Charlton, whose passion for street food developed after working on a stall in Sri Lanka. He's parked his vintage racing green Dodge in Merchant Square to serve tastebud tingleers such as the crispy chicken katsu burrito containing a secret spice seasoning and served with

colourful garnishes, pickles and Michael's signature curry sauce. The Dodge was "sourced in Holland but

was originally from California and refurbished in Weston-Super-Mare. Quite the journey," says Michael. "The robust 50s design makes it stand out from the crowd and it's a joy to serve people from."

Merchant Square is also home to the **Tucka** truck, which had been serving what were frequently described by loyal fans as "hands down, the best burgers I've ever eaten" until the founders decided to hang up their aprons last year. But now the crowd-pleasing favourites such as the Mark Tuckaburg and cheekily named Holy Tuck and What the Tuck are back in all their mouth-watering, dry-aged patty and cheese-oozing glory.

If you prefer to indulge your inner carnivore from the comfort of a banquette, the stylish subterranean **Bar + Block Steakhouse** is one to have on your radar. Marbled and tender 30 day-aged steaks hand-cut to order are a must, but the Steak Sampler – comprising a 4oz fillet, sirloin and rump – is great for those unsure of what to plump for. A moreish meat-free menu

meanwhile keeps the garden gourmets happy. **Premier Inn, North Wharf Road, W2 1LF. 020 7870 6468.**

**barandblock.co.uk.**

Of course, this is the time of year to dine al fresco and Hotel Indigo's recently launched **Garden Terrace** complete with an outdoor bar is the perfect place to host an intimate event or private tête-à-tête. Simply contact the team to discuss your requirements. **16 London Street, W2 1HL. 020 7706 4444. indigopaddington.com.**

Alternatively, **Bella Italia**, the home of hearty Italian fare, adjoins the hotel and has a terrace that is perfect for people watching. **020 7706 6555.**

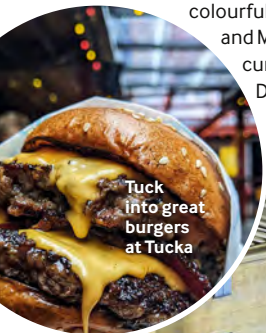
**bellaitalia.co.uk.**

Plus, there is an opportunity to continue the love affair with Italian cuisine should you so desire. A new branch of **Vapiano** – famed for its fresh, homemade pasta, pizza and risotto – is rumoured to be joining Paddington's roster of restaurants; for updates, keep an eye on **thisispaddington.com.**

## WORKOUT

Although the summer months tend to focus the mind on fitness, committing to working out regularly is key if it is to become habit once the sunshine fades.

Happily, making exercise a part of your routine is simple thanks to the hybrid approach of **GRNDHOUSE**, which



Tuck into great burgers at Tucka



Katsu King arrives in Merchant Square





Don't forget to share your photos with us  
 #ExplorePaddington @inpaddington  
 @InPaddington f InPaddington  
 ✉ magazine@paddingtonnow.co.uk

Paddington™ Café



launched as a live-stream strength-training platform during the pandemic before making classes available on demand via an app and in its funky new studio space in Sheldon Square. Classes will see you get a sweat on but are designed to be fun and cater to all levels, and range from a total body workout to targeted strength training for specific areas. Be sure to snap a post-workout selfie in the light tunnel before grabbing a coffee or protein shake from the coffee bar.  
 19 Sheldon Square, W2 6EY.

**grndhouse.com.**

Low-cost membership is the big draw of **The Gym Group**, which is set to open its doors in Merchant Square from mid-July. Sign up now to take advantage of an introductory membership rate and then keep your eyes peeled on social media for confirmation of the opening date. Not only will the grand opening see 15-minute back-to-back taster sessions of all the available classes on the timetable, but there will also be celebratory collaborations with the nearby food trucks and businesses.  
 33 North Wharf Road, W2 1LA.

**theygymgroup.com.**

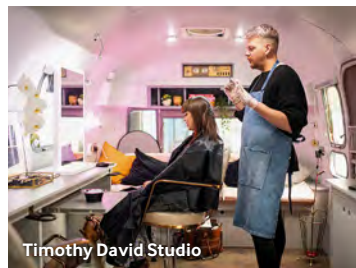
### STYLE IT OUT

If you spot a shiny 1969 Airstream Safari in Merchant Square this summer, it hasn't got lost on its way to a film set (although its owner is pretty au fait with Hollywood A-listers, having worked with Gillian Anderson and Grace Jones).



The glistening 'Pauline', as the air-conditioned Airstream is affectionately known, is named after hair stylist Timothy David's mother and is home to the **Timothy David Studio**.

"I am so thrilled to be opening up in such a buzzing and exciting atmosphere as Paddington and I can't wait to welcome clients old and new to my beloved Pauline's new location," says Timothy. As an LGBTQ+-owned business, inclusion is central to the ethos with gender-neutral pricing for services based on hair length and not sex. "Timothy David Studio is proud to be a safe space for all communities, backgrounds and genders," adds Timothy.  
**timothydavid.co.uk.**



### MUST VISIT

**Still in need of sustenance? With the easing of lockdown restrictions last year, an influx of cafés, dining spots and fast-food joints have sprung up in the area**

Feeling hungry or in need of a caffeine fix? Follow everyone's favourite bear to **Paddington™ Café** in Paddington Station for fresh bites and delicious pastries, and of course, single-origin Peruvian coffee. The comfortable and charming space features playful and subtle Paddington touches giving the feeling Paddington could push open the door at any time. [www.instagram.com/paddingtoncafelondon](http://www.instagram.com/paddingtoncafelondon). Open from 8am to 8pm.

**Gail's Bakery** in Paddington Basin is a perfect canalside pitstop for hand-roasted coffee, handmade bread and a delicious selection of treats. [gailsbread.co.uk](http://gailsbread.co.uk).

An eatery that has reinvented itself in the past few years is **McDonald's**. A new restaurant on Praed Street offers old favourites and healthy options in a welcoming space. [mcdonalds.com](http://mcdonalds.com).

**Greggs** is another welcome addition to Praed Street. Choose from freshly prepared sausage rolls, its famous Steak Bakes and vegan alternatives. [greggs.co.uk](http://greggs.co.uk).

Finally, Asian noodle restaurant giant **Wagamama** has opened its doors in Sheldon Square. A bowl of spicy ramen or their classic chicken katsu curry, washed down with a freshly-pressed juice, makes the perfect lunch. [wagamama.com](http://wagamama.com).

# BRICKLIVE™ is coming to Paddington

*Fans of Paddington Bear™ will be over the moon this July, as a series of building brick-based models of iconic characters from the franchise is coming to Norfolk Square Gardens*





Copyright © Brick Live Group Limited. All rights reserved. Brick Live Group Limited is an independent producer of BRICKLIVE and is not associated with The LEGO Group. LEGO® is a trademark of LEGO Juris A/S.

**P**addingtonNow Business Improvement District has partnered with BRICKLIVE Group to bring life size brick models from the Paddington™ franchise to London. The models will be displayed as a colourful curated collection with free entry to the public in Norfolk Square Gardens from the 23 to 31st July 2022.

The world's favourite marmalade-loving bear will be joined by Aunt Lucy, Uncle Pastuzo and others. This free attraction is perfect for Paddington and Brick lovers alike as it showcases the iconic bear in a completely new environment. A launch event will take place on Saturday 23 July including funfair rides, face painting, balloon artists and much more.

'BRICKLIVE is delighted that PaddingtonNow BID is hosting our Paddington models in Norfolk Square Gardens in London this summer, it is the first time that the models will be on show in London and the event is undoubtedly going to be a huge success.'

**David Ciclitira**, *Chairman Live Company*

'The BID organises incredible events in Paddington to support the business community and drive footfall to the area. The Paddington Bear™ exhibition built by BRICKLIVE is sure to enliven the area over peak tourist and school holidays season and we hope to see the area in full swing this summer after a difficult couple of years.'

**Chris Peers**, *BID Manager*

'Copyrights is thrilled to see this trail coming to Paddington so fans can live a great Paddington Bear experience discovering the life size brick models of their favourite characters and enjoying a good time at the Paddington Café in the station.'

**Sophie Kopaczynski**, *CEO The Copyrights Group*

**For more details follow:  
[thispaddington.com](https://thispaddington.com)**

# WHATEVER FLOATS YOUR BOAT

*By day, you can explore the Grand Union Canal by kayak, paddleboard or your own boat. Stay later and you can see another side of the waterway, on a cruise or at a floating restaurant, says Sarah Riches*



**Clockwise from top left:**  
Fan Bridge; paddleboard with Active360; cruise in style with GoBoat; oysters aboard The Grand Duchess; canoe for two

## SEIZE THE DAY

Start your day by watching kids as they joyously dart between fountains in Paddington Basin. **Merchant Square Water Maze's** 320 water jets form concentric circles that vary from gentle bubbles to shoulder-height sensations.

Once you've seen the maze, linger till noon for a different type of show. Designed by Knight Architects, the 20m **Fan Bridge** in Paddington Basin unfolds

its five beams like a Japanese fan until it crosses the water, allowing you to pass (every Wednesday and Friday at noon).

## ONE FINE AFTERNOON

Come lunchtime, grab a deckchair and tune in to the **singer-songwriters** that perform live monthly on Thursdays during summer in Merchant Square.

Fancy being captain for the day? Then hire one of **GoBoat's** many vessels –



groups can book up to three at a time. Powered by electric engines, the boats cruise along the canal at a leisurely 4mph – no faster than a brisk walk. Once you've got the hang of it, steer your craft from Paddington Basin to Little Venice, through Maida Hill Tunnel and around Regent's Park – look out for African wild dogs and warthogs as you pass ZSL London Zoo.

Once you've mastered a GoBoat, discover the canal by kayak or paddleboard with **Active360**. If you're up for a challenge, you can also try yoga or Pilates on a paddleboard – if you fall in, you can shower afterwards.

You can also sign up to collect litter from the canal while on a paddleboard. Owner Paul Hyman says, "Our paddle and pick sessions have become popular with corporate groups – we even had a request for a group of 100."

This summer the watersports company is moving to a bigger space near the Paddington Basin footbridge. "We currently have 10 canoes and two single kayaks," adds Paul. "But the bigger space means we can add more double kayaks."

## EARLY EVENING EATS

All that paddling will have worked up your appetite but you needn't travel far for dinner. Paddington is home to a floating supperclub in Paddington Basin and five floating restaurants near Sheldon Square, just a few minutes' walk away.

Be sure to go for relaxing sundowners at **Darcie & May Green**, which serves international dishes such as sashimi salad and crunchy halloumi fries.

Fans of fromage might want to try **The Cheese Barge** instead. Designed by award-winning Adam Richards Architects, the 29m double-decker boat serves British cheese most of the day, as it is open for lunch, "afternoon cheese", cheesy snacks such as toasties and teatime platters, and dinner.

More of a fish fan? Then, come 6pm, board **London Shell Co's** 21m canal boat, **The Prince Regent**, for a dinner cruise to Camden and back. Its six-course seafood menu changes depending on what the chef can source that day. If **The Prince Regent** is fully booked, consider **London Shell Co's** static vessel, **The Grand Duchess**, instead, as it's more spacious. It also serves Cornish seafood such as crab with samphire and hand-dived scallops. If you just fancy a couple of beers and



**Clockwise from top left:** Monthly live music; cool down on BrewDog's waterside terrace; relax by the water in Merchant Square

some good food in the sun with friends **BrewDog Paddington** is the perfect location for freshly-poured craft beer, monster burgers and buffalo wings. Load up on 2-for-1 vegan and vegetarian mains every Monday. All served up with great views from their terrace overlooking Paddington Basin.

## FLOATING FUN

London has plenty of green spaces, but a **Floating Pocket Park** really is unique. Perched on the waters of Paddington Basin, the Floating Pocket Park features open lawn areas, densely planted nectar-rich mixed raised borders and communal seating, as well as allowing people to walk over the water on a series of decked platforms and walkways. Bespoke planting has been developed to encourage wildlife and the park includes a separate pontoon designed to attract ground-nesting birds.

## TIME TO CALL IT A NIGHT

If rocking gently side to side while watching *La La Land* doesn't send you to the land of nod (see page 6), then book **The Boathouse – Paddington West** instead, which is permanently moored in Paddington Basin. The floating hotel sleeps four, and can host dinners on its rooftop. After your day by the canal, you'll be asleep the moment your head hits the pillow.



## NEED TO KNOW

### Merchant Square Water Maze,

Mon-Fri 7am-5pm; Sat-Sun 9am-5pm.  
Merchant Square, W2 1JS. 020 7298 2455.  
[merchantsquare.co.uk](http://merchantsquare.co.uk).

### Fan Bridge,

Wed, Fri & Sat noon.  
Merchant Square, *see above*.

### Live music, Free, Thurs, monthly.

Merchant Square, *see above*.

### GoBoat,

Merchant Square, W2 1AS.  
020 3887 6955.  
[goboat.co.uk](http://goboat.co.uk).

### Active 360,

Merchant Square, W2 1JZ.  
020 3393 5360.  
[active360.co.uk](http://active360.co.uk).

### Darcie & May Green,

Sheldon Square, Canalside at Paddington Station, W2 6DS. 020 3935 9045.  
[daisygreenfood.com](http://daisygreenfood.com).

### The Prince Regent,

Sheldon Square,  
W2 6PY. 07553 033636.  
[londonshellco.com](http://londonshellco.com).

### The Grand Duchess,

Sheldon Square, Paddington Central,  
W2 6PY. 07553 033636.  
[londonshellco.com](http://londonshellco.com).

### BrewDog,

West End Quay, Paddington Basin, W2 1JX.  
[brewdog.com](http://brewdog.com).

### The Cheese Barge,

Sheldon Square, W2 6DL.  
[thecheesebar.com](http://thecheesebar.com)

### Floating Pocket Park,

Paddington Basin, W2.  
[merchantsquare.co.uk](http://merchantsquare.co.uk).

### The Boathouse – Paddington West,

Floating Pocket Park, Merchant Square,  
W2 1JX. 07528 515363.  
[boathouselondon.co.uk](http://boathouselondon.co.uk).



# Locals: plan your day

*If an al fresco breakfast by the canal, outdoor yoga and a bike ride through a Royal Park sounds like urban utopia, then you're in the right place*



8.30AM

**8.30AM** Start the day as you mean to go on with a plate of smoked salmon, avocado, dark rye bread, poached eggs, lemon Hollandaise and chilli pesto at **Beany Green**, which has deckchairs overlooking the canal. Sheldon Square, W2 6EZ. 020 7289 3344. [daisygreenfood.com](http://daisygreenfood.com).



11.30AM

**10AM** If doing the cobra on a sun-dappled lawn beneath the trees sounds like your ideal morning, then drop into the **free yoga classes** held each week throughout June, July and August in Norfolk Square Gardens. Remember to take a yoga mat. W2. [thisispaddington.com](http://thisispaddington.com).



10AM

Al fresco yoga

**11.30AM** A carrot, orange and ginger juice will certainly perk you up after your yoga class. Order one to take away from **Café Panache** and wind down by drinking it in Talbot Square round the corner. 12 Norfolk Place, W2 1QL. 07801 429573.

**1PM** Save yourself for dinner and order the mozzarella, tomato and pesto salad for lunch at **Pizza Express**. Sit indoors by the floor-to-ceiling windows or on the canal-side terrace. 3 Merchant Square, W2 1BF. 020 7706 8000. [pizzaexpress.com](http://pizzaexpress.com).

**3PM** Once your light lunch has settled, cross over Fan Bridge and hop on a **Santander bike** – there's a docking station located on London Street. Meander through Paddington to the Italian Gardens in Hyde Park. [tfl.gov.uk](http://tfl.gov.uk); [royalparks.org.uk](http://royalparks.org.uk).

**7PM** Meet friends for dinner at **Casa Malevo**. People come here for Argentinian steak but you can always go rogue and order seabass with courgette, or lamb rump. 23 Connaught St, W2 2AY. 020 7402 1988. [casamalevo.com](http://casamalevo.com).

**9PM** The night is still young so make the most of it with a cocktail or whisky in **The Hyde Bar** in Roseate House Hotel, a townhouse that dates back to 1842. 3 Westbourne Terrace, W2 3UL. 020 7479 6600. [thehydebar.com](http://thehydebar.com).



9PM

Jekyll or Hyde?



7PM

**Have you visited one of these places? Then show us your pics!**

#ExplorePaddington  
@inpaddington InPaddington InPaddington  
magazine@paddingtonnow.co.uk

# Visitors: plan your day

*Feeling playful? Whether you have children or not, all ages can enjoy a Paddington-themed café and hunting for treasure and butterflies around W2*

**9AM** Fans of Michael Bond's classic tale about a bear can try fresh bites, delicious pastries and of course, single-origin Peruvian coffee at the **Paddington™ Café** in Paddington Station. You'll find charming touches, such as familiar red hats doubling as light shades, tables etched with bear silhouettes and a mural of our furry friend. Paddington Station, W2 HB. [www.instagram.com/paddingtoncafelondon](http://www.instagram.com/paddingtoncafelondon).



Paws for breakfast

**10.30AM** If you enjoy geocaching – using GPS to hunt for objects in public spaces around the world – then download the **Adventure Lab** app and start hunting for clues, puzzles and treasure in Paddington. [geocaching.com/sites/adventure-lab/](http://geocaching.com/sites/adventure-lab/)



**1PM** Dine on hummus, complimentary Lebanese bread and mezze at **Paramount Lebanese Kitchen**. Enjoy your food outside on the pavement or sit indoors, which is decorated with Chinese calligraphy, teapots and vases. 26 London Street, W2 1HH. 020 7402 6263. [paramountfinefoods.com](http://paramountfinefoods.com).



**3PM** Why not stroll down to Norfolk Square Gardens to admire two new beautiful **topiary butterflies** brought to you by PaddingtonNow BID. These butterfly-friendly flower structures and their surrounding garden have been designed to attract more butterflies and insects, whose role in the ecosystem is crucial. [paddingtonnow.co.uk](http://paddingtonnow.co.uk).



Winged wonders

**4.30PM** Order afternoon tea at **Roba** in Norfolk Towers Hotel and nibble on smoked salmon sandwiches, sultana scones and salted caramel brownies. 34 Norfolk Place, W2 1QW. 020 7262 0060. [norfolktowershotel.com](http://norfolktowershotel.com).

**7PM** As a DJ spins deep house tracks, sip a Hukka cocktail made with rum, coconut, lychee and lime and take in the views of Hyde Park at **Skylark Roof Garden**, a partially-covered roof terrace which is a staggering 10 floors up. Mon-Fri employees only; Sat-Sun open to the public. 4 Kingdom St, W2 6BD. 020 7846 1985. [skylarkroofgarden.co.uk](http://skylarkroofgarden.co.uk).



**8PM** Watch a show at **Canal Café Theatre**. Summer 2022 highlights include a piano singalong hosted by West End stars and comedians Kirsty Mann and Liz Guterbock. Delamere Terrace, W2 6NG. 020 7289 6054. [canalcafetheatre.com](http://canalcafetheatre.com).





### POSITIVE CHANGE TAKES ROOT

The Great British Summer. Few sights are more evocative of the season than butterflies flitting between flowers in full bloom. With a beguiling delicate beauty, these winged wonders are a vital cog in the ecosystem, acting as a barometer of the health of the environment.

In this pocket of West London an uptick in Butterfly numbers is being encouraged by PaddingtonNow BID with the development of spaces for species to forage and flourish. Head along to Sussex Gardens Triangle, for example, and you'll find a new wildflower meadow resplendent with nectar-rich flora that ensures it is an irresistible pollination pitstop.

It's the perfect place to while away some time spotting pretty Peacocks or striking Holly Blues as part of this year's **Big Butterfly Count**, which runs from 15 July to 7 August ([bigbutterflycount.butterfly-conservation.org](http://bigbutterflycount.butterfly-conservation.org)).

### MAKE IT COUNT

Once you're done, you can move your count to the tranquil **Norfolk Square Butterfly Garden**, where the vivid hues of two giant topiary butterfly sculptures do more than make a statement. Constructed from coloured dry moss and framed by butterfly and bee-friendly star jasmine plants, the sculptures sit in flower beds teeming with life.

### BUTTERFLY SUPERHIGHWAY

Paddington's wildflower meadow and butterfly garden form part of PaddingtonNow BID's **Butterfly Superhighway** that extends from Hyde Park in the south to the Floating Pocket Park, a verdant floating oasis in the north at Paddington Basin on the Grand Union Canal, which is a visually-striking public space.

Year-round, this biodiverse butterfly corridor is peppered with hanging baskets, floral railing troughs and planters that serve as vital stepping stones for pollinating insects as they

# The GOOD life



*Keen to live more sustainably? Kathryn Conway discovers initiatives empowering locals and visitors alike to make a positive difference in Paddington*







**Clockwise from top left:**  
A resplendent Wildflower Meadow; Sheldon Square Amphitheatre; Floating Pocket Park; butterflies evoke British summertime; encounter canal-side flora and fauna; explore the butterfly garden

travel between habitats. However, this botanical bonanza looks especially lovely in the summer months because judging for PaddingtonNow BID's entry to this year's **London in Bloom** competition ([londoninbloom.co.uk](http://londoninbloom.co.uk)) gets underway. This area-wide glow up is best enjoyed on foot.

Take a slight detour to Sussex Gardens Triangle and chart your very own nature trail. Walk from Hyde Park to Merchant Square's **Floating Pocket Park**, before following the towpath along the canal as far as you desire. As you wander, you will find lawn areas, raised borders, a pontoon for nesting birds, and a contemporary pavilion designed to provide support for plants as well as shade for visitors. Look out for waterfowl such as ducks, swans, Canadian and Egyptian geese and coots, and birds such as ring-necked parakeets.

On 5 July, join the community and help

clean the area as part of PaddingtonNow BID's **Take Pride in Paddington Day** ([paddingtonnow.co.uk](http://paddingtonnow.co.uk)).

### BUSINESSES MAKING A DIFFERENCE

After all that walking, chances are a pit-stop of your own will be on the agenda. Fortunately, many of Paddington's businesses are leading the charge on committing to sustainability.

When the weather is set fair, head to the terrace at **The Pilgrim** on Norfolk Square. Sip on Monmouth Coffee—sourced from single farms, estates and cooperatives—while sitting amongst garden herbs and flora at repurposed tables. Inside you'll find rooms filled with mood-enhancing plants and a BPA-free reusable water bottle that can be filled at the free mineral water station. The Pilgrim lives up to its mantra 'everything you need and nothing you don't' ([thepilgrim.com](http://thepilgrim.com)).

Meanwhile, at **Inhabit** on Southwick Street ([inhabithotels.com](http://inhabithotels.com)), a 360-degree approach to feeding your body, mind and

### Future FOCUS



In early 2023, the redeveloped Sheldon Square Amphitheatre in Paddington Central is expected to open. Improved accessibility and sustainability have been a driving force behind British Land's remodelling, and while visitors and residents can expect this much-loved space to retain its purpose as a place to gather, connect and entertain, there are some exciting additions afoot. A new cascading water feature and quiet refuges for contemplation and reflection are being incorporated for those who desire calm in their day. Meanwhile a vibrant new artwork by local artist Adam Nathaniel Furman will celebrate the colours of nature, reflecting the boost in diversity being encouraged by the addition of new trees and more than 40 plant species. [paddingtoncentral.com](http://paddingtoncentral.com)

### Find your FLOW



If the essence of sustainability is finding equilibrium between man and the natural world, there is perhaps no better expression of this than yoga in the great outdoors. Live Karma Yoga hosts free gentle flow yoga sessions designed for all abilities every Tuesday throughout June, July and August. Simply turn up or book online to join a session at 10am in Norfolk Square Gardens (barring rain). Bring your mat along and get set to reset. [thisispaddington.com/article/free-outdoor-yoga-paddington](http://thisispaddington.com/article/free-outdoor-yoga-paddington)

soul is the order of the day. On a mission to make the world a better place, the team here encourages mindful living. You can enjoy a moment of reflection in the Meditation Pod, guided nature walks, Pilates, and five styles of yoga in the Atrium, all with expert guidance and support. But, it's the hotel's environmental and social responsibility that is likely to impress most. From partnerships with social enterprises to engagement with the local community and plant-based dishes from Yeotown (this is the plant-based eatery's first hotel venture), Inhabit is a stylish window into what's possible when wellbeing—for the planet, for yourself and for others—is prioritised.



# PADDINGTON GOES PURPLE

*Stretching more than 100km, from Reading in the west through to Shenfield in the east, the Elizabeth line has been decades in the making. Rail enthusiast **Stuart Render** discovers that it was worth the wait*

You feel that if author Michael Bond, the creator of Paddington Bear, was writing today, he would have found a way to include London's newest railway line in his famous series of children's stories.

Some 64 years after the first book was published, a new railway station has emerged to the south of the iconic 19th-century Paddington Station.

On Tuesday 24 May, the first trains started operating on the central section of the newly named Elizabeth line. Within the first five days, more than one million passengers used the service,



which has almost halved journey times between Abbey Wood and Paddington, to less than half an hour.

Parts of the line had been operating for some time under Transport for London's 'TfL Rail' banner. The next section, including Bond Street Station, will open this autumn and the entire line will be operational by May 2023. But what is being regarded by many as one of Britain's most magnificent pieces of railway engineering is now in place.

The £18.8 billion Elizabeth line, carrying its purple royalty-inspired branding, now offers new, fast connections from Paddington to Tottenham Court Road, Liverpool Street, Canary Wharf and Abbey Wood.

It is a game-changer for London and locals alike: the journey from Paddington to Canary Wharf previously required taking the Tube to Baker Street and changing on to the Jubilee Line, which would have taken 35 to 40 minutes. Now, the line will whisk you there in just 17 minutes – less than half the time.

## SEAMLESS TRAVEL

At present there are three parts to the Elizabeth line. There's the section linking Paddington to Heathrow and Reading,



the section through central London to Liverpool Street and Abbey Wood, and the section from Liverpool Street out to Shenfield. Over the coming months, it will come together to offer seamless travel along the entire route network.

But, magnificent though all that is, the line is only part of the story.

Paddington Station has itself undergone what has been described as the greatest and most significant transformation since the original building was completed in the middle of the 19th century.

The development within the station has taken Departures Road and the western end of the space where the taxi rank used to be, and transformed it into a new pedestrianised, public realm. Overhead is a dramatic steel and glass canopy that allows natural light to flood into the building, and, thanks to a clever design, down to the platforms below.





Clockwise from bottom left: Elizabeth line passengers; HM Queen Elizabeth II and HRH Prince Edward Earl of Wessex; Ticket Hall; pupils from Marylebone Boys' School; Elizabeth line train carriage; inside the station; Mayor of London Sadiq Khan



schools in the vicinity of each of the nine new Elizabeth line stations. Marylebone Boys' School (MBS), which is a stone's throw away from Paddington Station, created an array of decorations to fill the open space. Adorning an 'urban realm' theme, with adaptations of the new train, 3D royal crowns and colourful bunting, the school transformed the space into an artist's haven to mark what the school describes as a joyous occasion. Special credit goes to Ousainou Janneh, an alumnus of MBS



who created the variations of the Elizabeth line train.

Commenting, headteacher of the school Richard Ardron, says: "We are very privileged to have been invited to display our students' artwork, to celebrate the opening of the Elizabeth line. With our secondary school being so centrally located in the heart of the Paddington Basin community, it can only present a positive opportunity for the staff and our pupils that the local transport links are further widening."

## BESPOKE WORKS OF ART

It's not just the architecture that makes a big impression. American artist Spencer Finch's *A Cloud Index*, a bespoke installation designed to mimic the sky, has been printed on the glazed roof of the station via a 120-metre-long canopy. It features a montage of clouds that changes according to the light, the direction of the sun and the time of day.

The sheer size of the new Elizabeth line station has to be seen to be believed.

It's said that the overall space could accommodate The Shard if laid on its side, and The Shard stands at 310m.

Down in the ticket hall there are eight flared elliptical columns, each clad in bronze to head height. The 'Lily Pad' light fittings reference the work of architect Matthew Digby Wyatt's 19th-century designs for the mainline station above. As part of the launch, TfL worked with



# EAT

Share your foodie photos

#ExplorePaddington

@inpaddington

InPaddington

InPaddington

magazine@paddingtonnow.co.uk

## Summer sensations

*Fresh salads by the water, pavement cafés and al fresco terraces; make the most of the brighter days and experience the delight of eating healthy dishes, bursting with bright flavours*

### EUROPE

#### GREAT BRITISH FLAVOURS

Harry and Leah Lobek have been champions of British cuisine ever since they founded **London Shell Co.** on the Grand Union Canal in 2016. The duo now have two floating restaurants: their original cruising narrowboat, *The Prince Regent*—featuring a covered outdoor section—and the static *Grand Duchess*, which has outdoor tables beneath canopies. Both serve warm-weather favourites such as Cornish seafood paired with wine. *The Prince Regent*, Sheldon Square, W2 6PY. 07553 033636; *The Grand Duchess*, Sheldon Square, Paddington Central, W2 6PY. 07553 033636. [londonshellco.com](http://londonshellco.com).

With its herringbone wooden floor, original fireplace and velvet armchairs, **The Pilgrim's** lounge feels like a classic British living room. But when the sun is shining, why stay indoors? Order smoked salmon peppered with shallots and samphire, sit on the terrace and wave at double-decker buses as they pass by. 25 London St, W2 1HH. [thepilgrim.com](http://thepilgrim.com).

#### SCANDI COOL

Minimalist décor, waterside dining and pickled and cured seafood: **KuPP** is a patch of Scandinavia in the heart of Paddington. Full-height windows fill the interior with light but the

best seats are on the canal-side terrace. Share a fresh, flavoursome smörgåsarbord of smoked salmon, mackerel pâté and beetroot jam. 5 Merchant Square, W2 1AS. 020 7262 8618. [kupp-uk.com](http://kupp-uk.com).

#### LA DOLCE VITA

When the sun is shining, unwind on **ASK Italian's** Spring Street terrace. Stripy canopies provide some shade, or opt for a table in the conservatory. Sip an Aperol spritz while sharing olives, bruschetta and arancini. 41-43 Spring St, W2 1JA. 020 3302 0915. [askitalian.co.uk](http://askitalian.co.uk).

If you're looking for a warm atmosphere to enjoy classic Italian pasta dishes or a bottomless pizza menu, go to **Bella Italia**. 16 London St, W2 1HL. 020 7706 6555. [bellaitalia.co.uk](http://bellaitalia.co.uk).

#### GREECE

Decorated with geometric tiles and a potted olive tree, the pavement terrace of **It's All Greek to Me** is a hot spot for a great meal. Come for a lunch of Greek salad, stuffed vine leaves and tzatziki or grab a chicken gyros (wrap) to go and eat it by the canal. 101 Praed St, W2 1NT. 020 7402 5505. [itsallgreetkto.me.london](http://itsallgreetkto.me.london).

#### PAN-EUROPEAN

**The Hyde Restaurant and Bar's** garden is a little-known secret hidden by walls of plants, trees and canopies; perfect for al fresco afternoon tea. Goat's cheese and fig relish sandwiches, anyone? 3 Westbourne Terrace, W2 3UL. 020 7479 6600. [thehydebar.com](http://thehydebar.com); [roseatehotels.com](http://roseatehotels.com).

#### AL FRESCO LIVING

Mediterranean vibes at ASK Italian



The Pilgrim



It's All Greek to Me



Paramount  
Lebanese Kitchen

TASTE  
OF THE  
LEVANT

Mihbaj Café & Kitchen

## MIDDLE EAST

### LEBANON

Founded in 2007, family-run **Lena's Café** is popular with office workers partly due to its fresh, vibrant ingredients. The lunch spot serves dishes from the Levant – think grilled aubergine studded with pomegranate, and falafels. On sunny days, order a takeaway before heading to Paddington Basin.

83 Praed St, W2 1NT.  
020 7402 7776.

[lenascafe.com](http://lenascafe.com).

Another Middle Eastern favourite, **Paramount Lebanese Kitchen** specialises in shawarma, a street food wrap with grilled meat, pickles and salad. Great with the beetroot and spicy pecan salad. When the sun is

shining, get your food to go and eat it in neighbouring Norfolk Square Gardens. 26 London St, W2 1HH. 020 7262 1111.

[paramountfinefoods.com](http://paramountfinefoods.com).

### JORDAN/PALESTINE

You may have spotted the seats on the pavement outside **Mihbaj Café &**

**Kitchen**, but did you know it has a patio at the back, too? Pull up a stool and sit at its only table, which is built around a fairy lit tree. Order plates popular in Jordan and Palestine, such as halloumi and the spicy tomato and egg dish, shakshuka. 153 Praed St, W2 1RL. 020 7706 3063. [mihbaj.co.uk](http://mihbaj.co.uk).

## ASIA

### FUSION FOOD

If you're after a light, summery dish bursting with flavours, you'll find it at **Skylark Roof Garden** – with an al fresco vibe to boot. It serves inspirational Asian fusion dishes, such as burrata with lemongrass, gyoza dumplings dipped in a sticky plum sauce, and popcorn

shrimp with raita yoghurt. 4 Kingdom St, W2 6BD. 020 7846 1985. [skylarkroofgarden.co.uk](http://skylarkroofgarden.co.uk).

### KOREAN

Authentic Korean barbecue food at **Zanchi** includes fried dumplings, fried chicken and a spicy beef stew that packs a punch. 113-115 Praed St, W2 1RL. 020 7723 9550.

### MALAYSIA

Established in 1973, **Satay House** is a family-owned Malaysian restaurant. It serves delectable dishes such as a vegan nasi goreng – fried rice with vegetables and tofu in a mushroom, sesame and sweet soy sauce. 13 Sale Place, W2 1PX. 020 7723 6763. [satay-house.co.uk](http://satay-house.co.uk).



### PERU/JAPAN

Intimate **Ayllu** is for dates with a difference. Try Peruvian-Japanese cuisine. Opt for the Peruvian tasting menu to enjoy dishes such as ceviche and thinly sliced octopus, or try sashimi and sushi from the Japanese tasting menu. A DJ spins Latin beats most nights. *Beneath Smith's Bar & Grill*, 25 Sheldon Square, W2 6EY. 020 8054 0385. [ayllu.co.uk](http://ayllu.co.uk).

## LATIN

### MEXICO

Since it launched in 2017, free-spirited **Pergola Paddington** has served Chinese dumplings from Mami Lan, New Orleans'-style shrimp by Decatur and Hawaiian rice bowls courtesy of Honi Poke. This summer, the two-storey bar and street food spot is transforming into Pergola Paraíso and serving Mexican dishes. For a lighter option order the vegan Yaca Yaca, made with barbecued jerk jackfruit. Dine under the pergola then hit the rooftop for sunset views. 5 Kingdom St, W2 6PY. [pergolapaddington.com](http://pergolapaddington.com).



Skylark Roof Garden

## OCEANIA

### AUSTRALIA

Founded by an Aussie who grew up on a sheep farm near Melbourne, **Bondi Green** is the largest of the Daisy Green Collection cafés scattered around the city. While each is uniquely designed, all share a love of healthy Australian cuisine with pops of Asian



VIBRANT  
DÉCOR

flavours and vibrant décor. Sit on deck chairs beneath a palm tree or a frilly parasol by the canal and tuck into a Summertime Portobello – roasted mushrooms on charcoal sourdough with pesto, vegan cheese sauce and green dukkah. 1-2 Canalside Walk, W2 1DG. 020 3325 1340. [daisygreenfood.com](http://daisygreenfood.com).

# DRINK

## Expect the unexpected

Whether you want a night of cabaret, to sit at the longest bar in London or drink cocktails in a cabana, you can experience something completely unexpected in Paddington

### GAME NIGHT

'All work and no play makes Jack a dull boy', so why not combine the two at **BrewDog Paddington's** new initiative, Desk Dog. This dog-friendly pub at the end of Paddington Basin has an area at the back that's designed for hot deskers. By day, for £7 you can take advantage of free Wi-Fi and unlimited tea and coffee; come 6pm, snap that laptop shut and enjoy a pint of Punk IPA on the house. You can also enjoy a game of shuffleboard and try out its new pinball machines. *Harbet Rd, W2 1AJ (access from Merchant Square). 020 7723 9286. [brewdog.com](http://brewdog.com).*

Got a date? Reduce the chances of running out of things to say at **Heist Bank**, where you can bank on having fun thanks to its pool table and table football. It also has a wide selection of classic board games, from Scrabble and Monopoly to Cluedo, Articulate and Guess Who? Alternatively, visit with colleagues or organise a birthday bash in the private games room downstairs—which comes with a Nintendo 64 console, projector and karaoke machine. *5 North Wharf Rd, W2 1LA. 020 7723 8080. [heistbank.com](http://heistbank.com).*

Whether you're on holiday with friends and family or want a night out with your neighbours, **Lockhouse** delivers. It hosts regular events such as cabaret shows and this June it celebrated the Queen's Platinum Jubilee with a

garden party on the lawn outside, complete with giant Jenga and Connect 4. Try their cocktails! *3 Merchant Square, W2 1AZ. 020 7706 4253. [lockhouselondon.com](http://lockhouselondon.com).*

If you just want a drink in a good old-fashioned pub then stop by **Fountains Abbey**, which was established in 1823 opposite St Mary's Hospital. The Nobel Prize-winner Alexander Fleming, who discovered penicillin at the hospital, was a regular here. *109 Praed St, W2 1RL. 020 7723 2364. [greeneaking-pubs.co.uk](http://greeneaking-pubs.co.uk).*

### SIP IN STYLE

**The Sussex Arms** got off to a flying start when it reopened in 2020 with an aviation theme. Order a drink at the bar—which is made from an old Airbus A320 engine, wing and fuselage—and sit in one of eight original Concorde seats, or sip a pint in the business lounge at the rear. As well as four screens showing occasional matches, the bar also has a digital jukebox. Cue the *Top Gun* theme tune. *21 London St, W2 1HL. 020 7723 1026. [sussexarms.com](http://sussexarms.com).*

If you are looking for a bar with a summer vibe, you will find what you're after at **Darcie & May Green**. The legendary Pop artist Sir Peter Blake—the man behind The Beatles' *Sgt Pepper's Lonely Hearts Club Band* album cover—designed the boat's exterior, which is painted with rainbow-hued stars, stripes and hearts.



The Handlebar Club at The Heron

The drinks are just as vibrant, so order a cocktail garnished with edible petals and sip it on the roof as the sun goes down. *Sheldon Square, Canalside at Paddington Station, W2 6DS. 020 3935 9045. [daisygreenfood.com](http://daisygreenfood.com).*

If you dream of taking an all-American road trip this year, head to **Bar Torelli** to plot your route over a cappuccino, white wine spritzer or beer. The canalside café is housed in a converted Airstream caravan that gleams in the sun. Canopies provide shade for the al fresco tables. *Station Bridge, Merchant Square, W2 1AS. [bartorellilondon.com](http://bartorellilondon.com).*



Cocktails with a twist at Lockhouse

Prosecco o'clock at Bar Torelli



Cabaret nights at Lockhouse

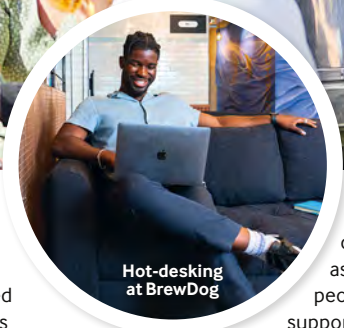


Summertime at Fountains Abbey

Boasting the longest bar in London, **The Dickens Tavern** is a traditional boozer named after the novelist Charles Dickens, so expect Victorian-style wrought iron street lamps outside and historic framed photos lining the walls. It's the perfect spot for a pint, particularly if you've got a train to catch as it's just a minute's walk from Paddington Station. 25 London St, W2 1HH. 020 7262 2365. [greeneeking-pubs.co.uk](http://greeneeking-pubs.co.uk).

### PARTY TIME

If you are new to the area and keen to make friends, grow a moustache. It may be an unconventional way to swap numbers with someone but it will grant you access to The Handlebar Club, a group of hirsute locals who meet at **The Heron** on the first Friday of every month. Established in 1947 in The Windmill Theatre in Soho, the group's purpose is to swap moustache-grooming tips and



Hot-desking at BrewDog

to fundraise for charities, so as well as meeting new people you can help support charities for children and former servicemen

and women. Take note: beards and fake moustaches are big no-nos. *Norfolk Crescent, W2 2DN. 020 7724 8463. [theheronpaddington.com](http://theheronpaddington.com).*

For those of you who believe moustaches are strictly for 'Movember', consider socialising at the **Frontline Club** instead. Part restaurant, part bar and event space, the former three-storey factory hosts regular talks, screenings and photography exhibitions themed around war reporting. Recent events have included a panel discussing press coverage of migration and refugees. 13 Norfolk Place, W2 1QJ. 020 7479 8950. [frontlineclub.com](http://frontlineclub.com).

Designed for 850 revellers, **Pergola Paddington** is spread over two floors: one under the shade of a pergola, the other a glamorous rooftop that's just

perfect for balmy summer evenings. This season, the whole venue has been transformed into an 'Insta'-friendly beach club inspired by the Mexican resort of Tulum, with cacti, Corona beer and a DJ. Order ceviche and tacos and relax in hanging chairs, then cosy up on a bed in a cabana with shots of tequila or smoky mezcal. 5 Kingdom St, W2 6PY. 020 81871035. [pergolalondon.com](http://pergolalondon.com).

You've had dinner in the Frontline Club, met new pals in The Heron and shared a tippie or two in Pergola Paddington. So where next? **Huckster**, of course. Designed for groups, it has street food vendors, three karaoke rooms and a US-style subway carriage with dancing poles. Bring. It. On. 4 Kingdom St, W2 6BD. 020 7846 1985. [hucksterlondon.co.uk](http://hucksterlondon.co.uk).

Darcie & May Green © The Paddington Partnership; Huckster © Holly Farrer; Monopoly and cabaret performer © Shutterstock; Pergola © Pergola; The Handlebar Club © The Heron; Bar Torelli © The Paddington Partnership; Desk Dog © Brewdog; Fountains Abbey © PaddingtonNow; Lockhouse © Lockhouse

# GIVE

## Goodwill hunting

*Want to lend your support to a worthy cause? Dragon boats, ducks and even dining out are all ways you can do good this summer*

**N**ow that events are back on the agenda, the calendar is jam-packed with fundraising opportunities that help to ensure Paddington's local heroes can continue their incredible work.

### THE RACE IS ON

Perhaps one of the best-loved charitable spectacles of the season is the annual Dragon Boat Regatta, which is making a welcome return following a two-year hiatus due to the pandemic from 5pm on 28 July. Teams comprising up to 10 rowers, many in fancy dress, will gather in Paddington Basin to paddle dragon boats furiously (and raucously thanks to the beat of the team drummers) along the Merchant Square canal in a bid to win the coveted Dragon Boat Regatta Cup.

Sponsorship raised by the crews funds the work of COSMIC (Children of St



Mary's Intensive Care), a charity that supports the vital work of the children's and neonatal intensive care units at St Mary's and Queen Charlotte's Hospitals. So why not enter a team (the deadline for applications is 4 July) or simply spectate and soak up the canalside entertainment? After all, with the charity's annual Duck Race taking place the same day (sponsoring a duck costs just £3), Merchant Square is the place to be ([merchant-square.co.uk](http://merchant-square.co.uk)).

### BOOTS ARE MADE FOR WALKING

Another NHS-focused charity putting the fun into fundraising is the Imperial Health Charity. The charitable arm of the Imperial College Healthcare NHS Trust makes it simple to donate your time and money with plenty of ideas online, but there is nothing quite like the challenge of getting out into the great outdoors.

Throughout July, the charity is encouraging people to sign up to Walk for Wards and get sponsored to walk the equivalent of the 11.4 km between the Trust's five hospitals ([imperialcharity.org.uk/walkforwards](http://imperialcharity.org.uk/walkforwards)). The walk could be anywhere, so grab the Paddington map and get exploring. ([thisispaddington.com/map](http://thisispaddington.com/map)).

### GET ON BOARD

For those who prefer more leisurely feel-good pursuits, take a trip to All Aboard in Spring Street ([allaboardshops.com](http://allaboardshops.com)). A feature of Paddington for more than 20 years, it sells pre-loved items such as clothes, accessories, jewellery and books and uses the proceeds to raise

money to support a wide range of charities and local causes. The Paddington store is always looking for volunteers willing to give up a few hours a week. Simply visit the

shop to discuss or email [volunteering@allaboardshops.com](mailto:volunteering@allaboardshops.com).

Finally, as the tragic events unfold in Ukraine, the work of the Frontline Club in Norfolk Place is so important. It champions independent journalism and supports journalists and photographers covering war and conflict through the Frontline Club Charitable Trust. Donations to the Trust's current campaign [#StraightFromTheFrontline](https://www.instagram.com/StraightFromTheFrontline), which supports those reporting from Ukraine, are welcomed ([ukraine.frontlinefreelance.org](http://ukraine.frontlinefreelance.org)), but becoming a member, attending the roster of events, or simply dining out in Norfolk Place – the Club's restaurant – will help ensure the good work continues. ([frontlineclub.com](http://frontlineclub.com)).



Frontline Club



# INTRA CAPITAL ESTATES



## SPECIALISTS IN SALES, LETTINGS & PROPERTY MANAGEMENT ACROSS THE BOROUGH OF WESTMINSTER.

Founded in 2019, we are an independent estate agency providing our clients with a highly personal service, tailored to meet your needs. If you are thinking of moving either now or in the near future, **we would love to hear from you.**



30,111

Residential properties: 2,238 houses, 5,438 conversions & 22,415 purpose built flats

311

Property sales recorded in the past 12 months and 1,192 in the last 36 months

£1,088,708

Average value

247

Number of streets in W2

£1,246

Avg price per square foot

(data valid as of 31/05/2022)

SPECIAL OFFER FOR W2 LANDLORDS

## 25% OFF OUR FULL MANAGEMENT SERVICE

FOR ALL NEW INSTRUCTIONS BEFORE 30/09/2022

Scan the QR code  
to see the value of  
your home



# CHANGE

## A glass act

Look out for a host of new developments – including some intriguing pieces of contemporary art



### THE SHAPE OF THE FUTURE

With its crystalline steel and glass façade and cube-like, levitating appearance, the 18-storey **Paddington Square**, set to partially open in September, is the latest project from architectural team Renzo Piano Building Workshop, also behind The Shard.

Positioned next to Paddington Station, the new quarter for work, retail and dining will feature a buzzing lobby area dubbed 'The Exchange'. Designed

to reflect the changing needs of the workplace, it will facilitate team collaboration as well as the ability to work in touchdown areas, socialise and host meetings and events. When it's time to switch off, workers can unwind by doing yoga, grab a drink from the bar or watch the world go by on the open-air terrace, which overlooks an exciting new public piazza.

This 1.35-acre square will hum with life, with trees, plants and public art



including a five-metre bronze by the Swiss artist Ugo Rondinone, who's known for his unconventional sculptures. You'll also be able to admire an installation suspended over four levels by Pae White and Catherine Yass's 24-metre photographic installation celebrating NHS workers, which will stretch across a wall on St Mary's Hospital next door.

As well as 14 floors of offices, the complex will have a new Bakerloo line entrance and ticket hall, which is scheduled to open in early 2023. It will also have 40 shops, cafés and restaurants spread across four floors.

Its crowning glory – a two-storey rooftop restaurant – will be one of London's highest. With a terrace overlooking Hyde Park and the London Eye on the horizon, it's the perfect spot to enjoy a cocktail as you watch the sunset. *W2. Offices 020 7087 5768; shops 020 7494 6945.*

[paddingtonsquare.co.uk](http://paddingtonsquare.co.uk).

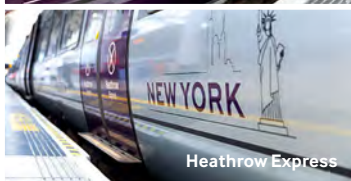
### TIME FOR A CHANGE

Clock watchers may have noticed another piece of public art, this time at **50 Eastbourne Terrace**, an office building with a restaurant, gym and shops coming to the ground floor soon.

Look above its entrance and you'll see *Real Time*, a clock by Maarten Baas. His work is exhibited in the V&A and the Museum of Modern Art in New York and San Francisco. *Real Time* is a series of 12-hour films of performance art, projected inside timepieces. A clock in Amsterdam's Schiphol Airport depicts the artist dressed in overalls, painting the time over a 12-hour period, while another, in Rotterdam's Erasmus Medical Centre, shows two men sweeping leaves to form clock hands.



See Paddington



The Paddington clock shows a man in a 19th-century three-piece suit – a reference to the era in which the station was built – painting and removing the clock hands, denoting time, minute-by-minute. But what inspired the artist? Baas says, “Time is related to all of us; you can’t avoid the passing of time. Yet, how one person relates to time is an individual experience. A human life is a collection of minutes, hours and days, and once a minute has passed, you wipe it away and it won’t come back. This personal interpretation is what interests me.”

50 Eastbourne Terrace, W2 6LG. 020 7182 2447. [fiftypaddington.com](http://fiftypaddington.com).

## BREATHING SPACE

Not to be outdone, **Sheldon Square** is set to unveil a piece of public art, too. Artist Adam Nathaniel Furman is known for his vibrant, Instagrammable, large-scale works, and his new piece will transform the amphitheatre’s walkway.

Born in St Mary’s Hospital to Argentinian and Japanese parents, the London-based artist’s work celebrates inclusivity and promotes wellbeing. The 50-metre piece, made from painted aluminium, draws on Paddington’s heritage and the amphitheatre’s plants. Furman explains, “It is inspired by origami, sheet piles used for building foundations along the canal and the colours of local vegetation.”

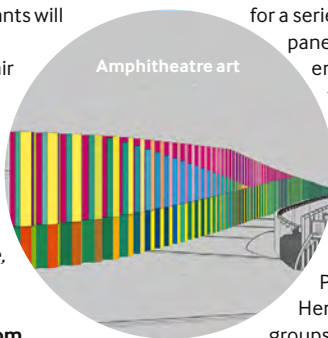
The artwork is just one of the changes that contractor 8build will make to the square in time for winter.

After community consultations, the new space is set to have a larger stage area for events, more comfortable seats and better lighting. It will also be more accessible with a new ramp, handrails and textured paving, in addition to a central staircase.

A water feature, trees and many colourful, perennial plants will help to increase biodiversity, improve air quality and make the space more attractive.

Sheldon Square’s shops, restaurants and gym will remain open during the works. *Sheldon Square, Paddington Central, W2 6AE.*

[paddingtoncentral.com](http://paddingtoncentral.com).



furniture to help pedestrians find their way around the area. The design firm Jedco joined forces with the infrastructure consultancy, Steer, and won the contest with its proposals for a series of perforated steel panels at the canal entrances. Inspired by the water, community, Paddington Station and local pioneers, the panels are themed around nature, heritage and personal connections. Poets Jo Bell and Sophie Herxheimer talked to local groups then translated their

stories into poems on the panels, which will be placed in seven locations from South Wharf Road to Bishop’s Bridge. [thispaddington.com](http://thispaddington.com).

## YOUR CARRIAGE AWAITS

To celebrate the return of global travel, **Heathrow Express** – which runs non-stop from Paddington Station to Heathrow Airport – has named 12 carriages after international cities.

Heart Radio hosted a competition to discover the public’s favourite destinations. The public chose London, Amsterdam, Barcelona, Dublin, Las Vegas, New York, Paris, Prague, Rome, San Francisco, Sydney and Tokyo.

Each carriage also features the iconic skylines to match, such as London’s Big Ben, New York’s Statue of Liberty and Sydney Opera House. Heathrow Express’s director, Sophie Chapman, unveiled the carriages at Paddington Station in May. When it comes to Paddington it really is All Change!

0345 600 1515. [heathrowexpress.com](http://heathrowexpress.com).

Real Time by Maarten Baas at 50 Eastbourne Terrace



# STAY



## Rooms with a view

*Excellent transport links are just one of the reasons visitors are choosing to stay in Paddington, and hotels are continuing to invest here. By Jo Caird*

You can see practically all the way across the capital from the bedrooms on the upper floors of the new Premier Inn London Paddington (Paddington Basin) hotel. With 393 rooms spread over 19 storeys, it's the largest central London offering from the hotel brand to date. The months since the hotel opened in March have been a whirlwind for hotel manager Karin Holmes, but there has been time for the occasional moment of reflection: "It's lovely standing up there and just looking out at London."

Premier Inn London Paddington (Paddington Basin) is the first foray into this part of London by the UK's biggest hotel brand, but it won't be long before two further properties are added to the local portfolio. Premier Inn is currently building its second Paddington hotel at Eastbourne Terrace opposite the entrance to the brand-new Elizabeth line station, while a new Hub by Premier Inn Marylebone will offer 294 more compact 'hub' rooms over 13 storeys in the heart of neighbouring Marylebone. The opening of the two hotels in 2023 will bring the number of Premier Inn beds in the Paddington area to around 1,000.

This long-term investment by Premier Inn's parent company Whitbread is testament to the existing opportunities



and future potential of the wider Paddington area. The largest area of growth within the City of Westminster, Paddington is a thriving business hub, home to major national and global headquarters. It also boasts a growing independent food and drink scene that's proving attractive for visitors and residents alike.

"We have guests that are working in London but have not been to this part of town for a while and they're quite surprised how much rejuvenation is going on," says Karin.

The area's excellent transport links are also a major draw. "There are so many access points into central London from

Paddington," explains Karin. "Edgware Road is very commutable, Marylebone and Baker Street are walkable. There are so many different places to get to from where we are."

Not to mention the connections to Heathrow Airport, and the new Elizabeth line, providing a high-speed route between Paddington and destinations including Tottenham Court Road, Liverpool Street and Canary Wharf.

### INCREASING DEMAND

Karin was anticipating high uptake for the new hotel but even she, with 23 years' experience in hospitality, all with Whitbread, has been surprised at how



Have you stayed at one of these hotels?

#ExplorePaddington @inpaddington

InPaddington InPaddington

magazine@paddingtonnow.co.uk

fast the rooms at Premier Inn London Paddington (Paddington Basin) hotel are getting booked up. "That proves that the demand has always been there and that it was a great decision to open up in the area," she says.

Gaining popularity are the enhanced Premier Plus rooms, which occupy the uppermost six floors of the hotel – and therefore boast the best views over London. Though in Paddington it has tended to be mainly business travellers booking these rooms at first, when leisure guests do experience them they make a point of requesting Premier Plus on return visits. "It is a very comfortable stay," says Karin proudly.

Though Premier Inn is a national brand, the hotel is firmly integrated into the local area thanks to the decision to give the recruitment drive a local focus. Karin is delighted that almost half of her 50-strong team live within three miles of the hotel, and that most of them had no prior experience of hospitality. Many were also out of work before joining Premier Inn and the Bar + Block Steakhouse destination restaurant within the hotel building.

"It's about building those teams and watching them grow, especially following the pandemic, which caused a lot of unemployment and a lot of lost confidence along the way," Karin says.

"To watch someone who didn't think they could do hospitality become one of our newly appointed people, and running their shift, is great."

When the new second Paddington property opens next year, it will be Karin at the helm there too, and she's champing at the bit to get started: "It's so exciting to work in this area!"

### YOU'VE BEEN UPGRADED

The area's hotel offering has been boosted by the recent arrival of **Wilde Aparthotel London Paddington**, a 249-room property featuring a bar, breakfast station, gym and spacious guest lounge. Comprising design-led



**Clockwise from top left:**  
A kitchenette in Wilde Aparthotel London Paddington; Premier Inn London Paddington; the facade of Wilde Aparthotel London Paddington; St. David's Hotel; the entrance and lobby at Sonder The Rove and staff at Premier Inn London Paddington



studios and one-bedroom apartments, the Aparthotel is the latest opening from the Staycity brand, which has London properties in Aldgate, Covent Garden, Greenwich and Heathrow. *4 North Wharf Road, W2 1NW. staycity.com.*

It's all change at **St. David's Hotels**, where a major refit has transformed nearly half of the 72 reasonably priced guestrooms and most of the public areas. The 32 new 'Superior' rooms boast an upgraded design scheme featuring wallpaper from local design house Ottoline, plus luxurious new beds and bathrooms. Located in an historic building, the family-run hotel makes the most of traditional features while embracing a modern boutique style. *14-20 Norfolk Square, W2 1RS. stdavidshotels.com.*

San Francisco hotel group Sonder is adding to its London portfolio with a second Paddington property, **Sonder The Rove**. The 53-room Voyage opened on Norfolk Square in April and will be joined by The Rove later this year.

Comprising 74 compact bedrooms, the hotel will feature the brand's modern, uncluttered style, offering travellers a convenient bolt hole for a reasonable price. Guests are able to handle all their interactions through the brand's app. *36 Norfolk Square, W2 1RT. sonder.com.*

The boutique four-star hotel, **Norfolk Towers**, has recently refurbished all of its 85 hotel rooms to the highest interior design standards. Its Deluxe rooms make the most of their large arched windows, allowing light to flood in, while its proximity to Paddington Station make it an ideal base from which to explore the area. *34 Norfolk Place, W2 1QW. 0207 262 0060. norfolktowershotel.com.*

**Bellevue Hotel**, nearby, is currently undergoing a refurbishment of its own. With its view of peaceful Norfolk Square Gardens and a cutting-edge neoclassical interior, this Victorian house is one of the most inspiring addresses around. *25-27 Norfolk Square, W2 1RX. belvuehotel.co.uk.*

WildeAparthotels © Staycity: Premier Inn London Paddington © Premier Inn; Sonder The Rove © The Rove; St. David's Hotel © St. David's Hotel



# 5 MINUTES WITH...



## Patrick Morey-Burrows

**Patrick Morey-Burrows is an art consultant and the founding director of ArtSource. Patrick curated *Real Time*, the new performance art clock installation by Maarten Baas, at 50 Eastbourne Terrace. Other notable commissions include *Nail*, the provocative bronze sculpture near St Paul's Cathedral, by Gavin Turk.**

### Tell us a little about what you do at ArtSource?

ArtSource specialises in sourcing and curating artwork for private collectors, commercial and the public realm. I maintain and build close relationships with artists, along with managing various live projects.

### How did you get involved with 50 Eastbourne Terrace?

Yard Nine, who are developing 40 and 50 Eastbourne Terrace, approached me. They wanted to include a piece of public art within the scheme. I was invited to suggest various options for the façade of the building on Eastbourne Terrace.

### How did that lead to working with Maarten Baas on the *Real Time* clock project?

It was a unanimous decision to work with him. Maarten made his first *Real Time* clock at Schiphol Airport in Amsterdam, where he is recorded on video as if he is inside the clock, painting the time over a 12-hour period. He is dressed in a blue overall, the same worn by the airport maintenance team. For the Paddington clock, Maarten wears a

tweed suit in the '12 hours' video, as a nod to the iconic engineer who designed Paddington Station, Isambard Kingdom Brunel.

### There are various new pieces of public art in Paddington. What do you think the reaction has been to your piece and art in general in Paddington?

Whenever I pass Maarten's Paddington clock, there are always people pointing and filming; sharing on social media... Friends who know I was associated with the Paddington clock often text and comment on how much they love it.

The redevelopments around Paddington aspire to be places where people want to work and visit; places that express themselves within a considered public realm give communities a stronger sense of place and identity. The best of public art can challenge, inspire, entertain, provoke thought and bring communities together. It should capture the eye and mind of someone passing and all we ask is that it slows

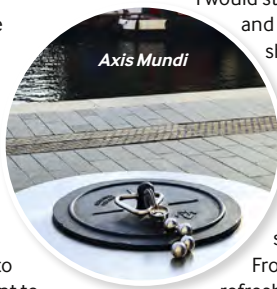
the viewer down and they engage on their own terms.

### Do you have any particular favourite pieces of public art in London?

Richard Serra's *Fulcrum* at Broadgate Circle and two Gavin Turk projects I was involved with; *Nail* at One New Change, and *Axis Mundi* – the giant plug in Paddington Basin – is both fun and functional as it covers a borehole associated with The Brunel Building.

### Finally, what would be a perfect day for you in Paddington?

I am picturing a sunny summer's day. I would start by visiting friends Rob and Nicky Carter, artists who show their amazing artwork at RNat5A, their studio at 5A Bathurst Mews. I would then wander through the Mews and head towards Paddington Basin, stopping in at the Frontline Club for refreshments. I would then enter Merchant Square and visit the various bridges that were commissioned using artists and designers including Thomas Heatherwick and Langlands & Bell. I would then go to Darcie & May Green for a spot of lunch on the barge. Then I might end the day hiring a paddleboard and head towards Little Venice for a G&T at The Summerhouse.





# GRANGE LONDON

Property Sales, Lettings & Management



Looking for your dream home?  
Scan to find it



# PADDINGTON™

Presented and built by

**BRICKLIVE**

**FREE FAMILY FUN  
DON'T MISS OUT!**



© P&Co. Ltd./SC 2022

**NORFOLK SQUARE GARDENS,  
PADDINGTON 23-31 JULY 2022**

**VISIT LIFE SIZED BRICK MODELS OF EVERYONE'S FAVOURITE  
MARMALADE-SANDWICH-LOVING BEAR, PADDINGTON™  
AND OTHER CHARACTERS FROM THE FAMOUS BOOK.**

- FUN OUTDOOR EXHIBITION • LEARN FACTS AND FIGURES ABOUT PADDINGTON AND HIS FRIENDS • BRING A PICNIC • TAKE A SELFIE • THE PERFECT FAMILY DAY OUT

**ON 23 JULY, FOR ONE DAY ONLY, THERE WILL BE FUNFAIR RIDES, FACE  
PAINTERS AND MORE TO CELEBRATE THE LAUNCH OF THE EXHIBITION.**

For more information follow @inpaddington or go to [www.thisispaddington.com](http://www.thisispaddington.com)

Brought to you by

**PaddingtonNow**

BUSINESS  
IMPROVEMENT  
DISTRICT

[www.bricklivegroup.com](http://www.bricklivegroup.com)